


# Secomore

Always Keep Moving





# PRODUCT INDEX

	<b>PANEL LIGHT</b> 03
	<ul style="list-style-type: none"> <li>Recta Panel</li> <li>Prime Panel</li> <li>Premium Panel</li> <li>Platinum Panel</li> <li>Super Slim Panel</li> <li>2 Color Panel</li> <li>3 Color Panel</li> <li>Vista Panel</li> <li>Panels By Feet</li> </ul>

	<b>DOWNLIGHT</b> 07
	<ul style="list-style-type: none"> <li>Lumina Downlight</li> <li>Junction Box</li> <li>Deep Downlight</li> <li>Moon Downlight</li> <li>Ceiling Downlight</li> </ul>


	<b>SPOTLIGHT</b> 09
	<ul style="list-style-type: none"> <li>Orbit Spot Light</li> <li>Halo Spotlight</li> <li>Mini COB Spot Light</li> <li>COB Surface Spot Light</li> <li>Striker Spot Light</li> <li>COB Spot Light</li> </ul>

	<b>TRACK LIGHT</b> 11
	<ul style="list-style-type: none"> <li>Track Light</li> </ul>

	<b>STRIP LIGHT</b> 12
	<ul style="list-style-type: none"> <li>Strip Light</li> </ul>

	<b>TUBE LIGHT</b> 13
	<ul style="list-style-type: none"> <li>Bliss Tube</li> <li>Optima Tube</li> <li>Purification Tube</li> <li>Pro Tube</li> </ul>

	<b>HIGHBAY</b> 15
	<ul style="list-style-type: none"> <li>Highbay Light</li> </ul>

	<b>LED BULB</b> 16
	<ul style="list-style-type: none"> <li>Orion Bulb</li> <li>Tube Bulb</li> <li>'O' Bulb</li> </ul>

	<b>FLOOD LIGHT</b> 17
	<ul style="list-style-type: none"> <li>Slim SMD Flood Light</li> <li>Disc Flood Light</li> <li>Flash Flood Light</li> <li>Radiant Flood Light</li> <li>Bryto Flood Light</li> <li>Lens Flood Light</li> </ul>

	<b>STREET LIGHT</b> 19
	<ul style="list-style-type: none"> <li>Arc Street Light</li> <li>Classic Street Light</li> <li>Glaze Street Light</li> <li>Dazzle Street Light</li> </ul>

	<b>WALL LIGHT</b> 21
---	----------------------

	<b>GARDEN LIGHT</b> 23
---	------------------------

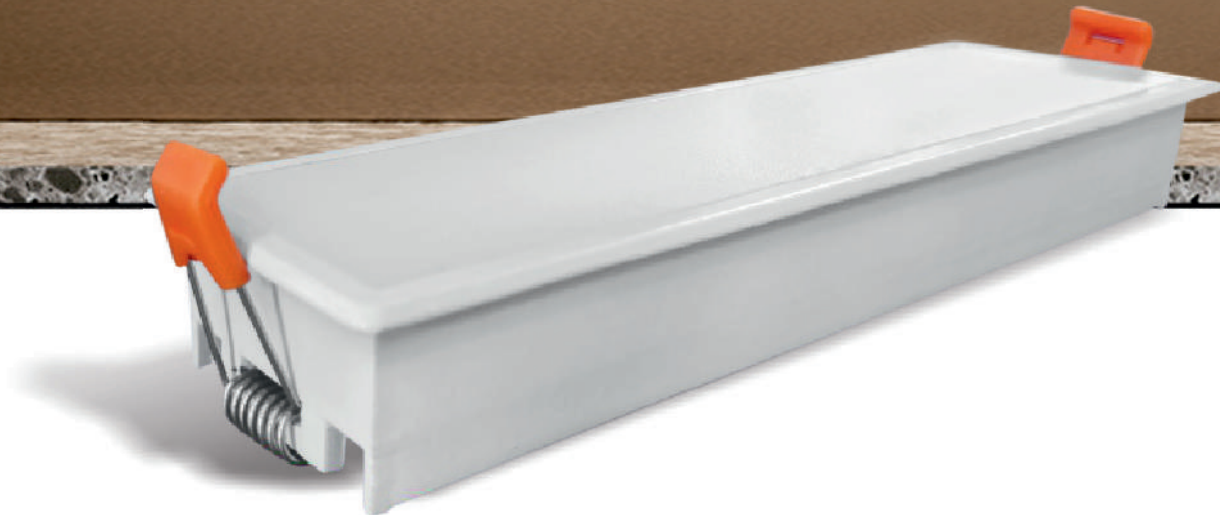
	<b>SOLAR LIGHT</b> 24
--	-----------------------

	<b>METAL HALIDE</b> 25
---	------------------------

	<b>LED DRIVERS</b> 25
---	-----------------------

# RECTA PANEL

The new way of lighting!



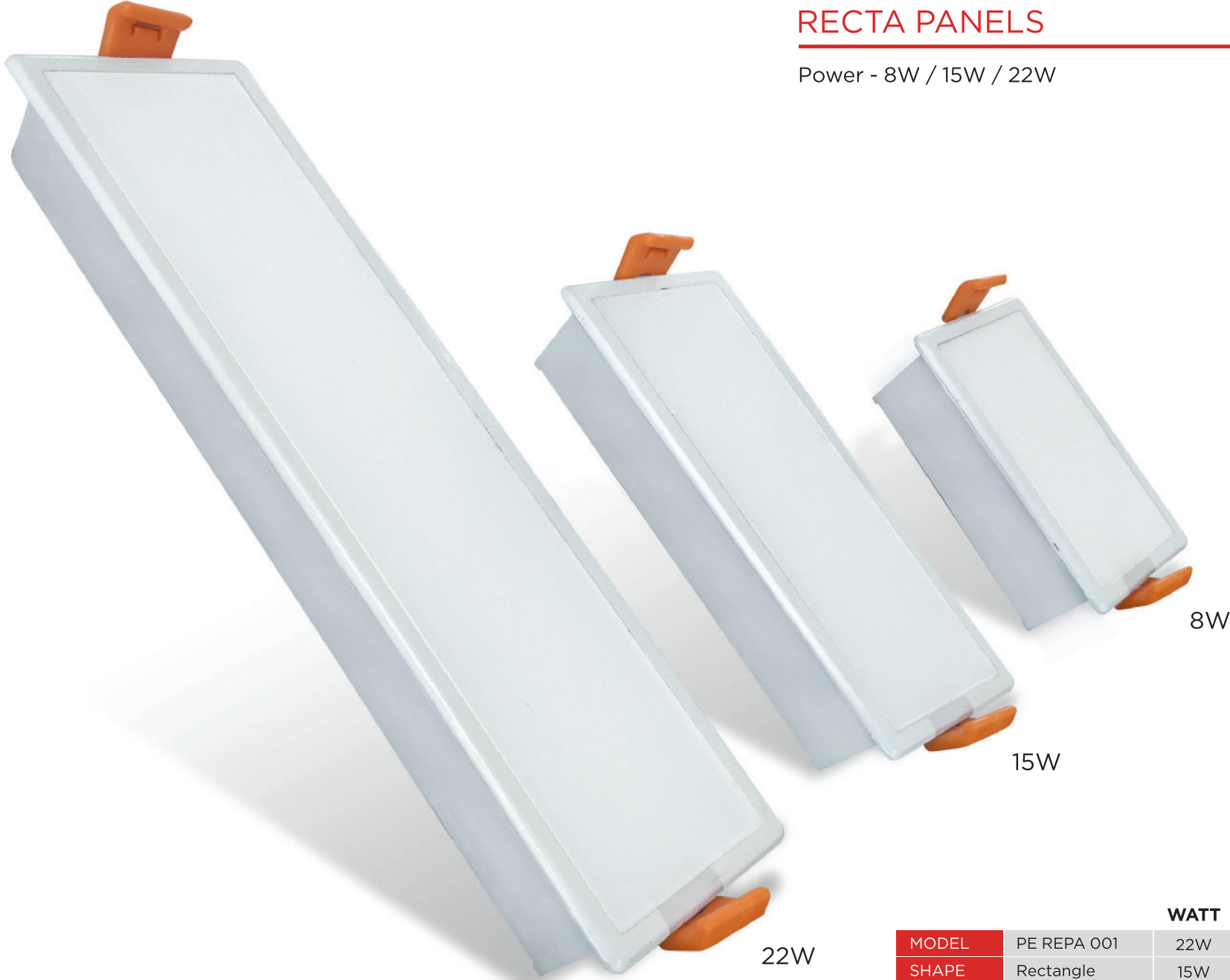
## Defining a new design language.

Pride's Recta Panel is India's first ever slimmest LED fixture designed to replace conventional ceiling panel lights. These panels are unique in their shape that give an ease of installation and brighter lighting output while controlling high power consumption.

# RECTA PANELS

2 Year Warranty

Power - 8W / 15W / 22W



L  
E  
D  
P  
A  
N  
E  
L  
S

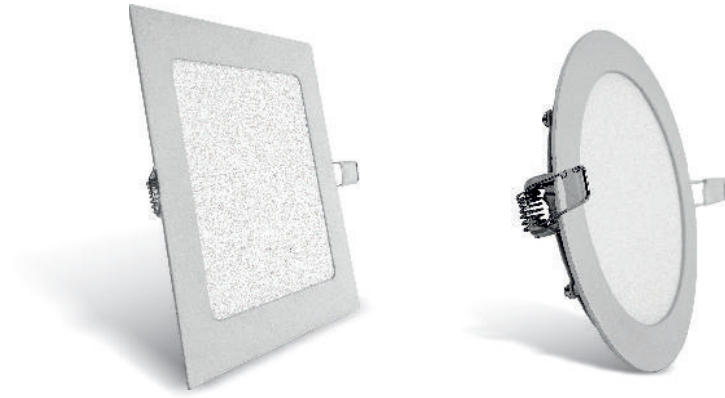
		WATT	DIMENSIONS
MODEL	PE REPA 001	22W	215x50 mm
SHAPE	Rectangle	15W	145x50 mm
COLOR	WH / WW / NW	8W	95x50 mm
VOLTAGE	AC 100 - 250 V		

Available In - Recess

## PRIME PANELS

2 Year Warranty

Power - 3W / 8W / 15W / 22W



MODEL	PE PRPA 001	PE PRPA 002
SHAPE	Square	Round
COLOR	WH / WW / NW	
VOLTAGE	AC 100 - 250 V	

Available In - Recess / Surface

3w Panels In Red / Green / Blue

## PLATINUM PANELS

3 Year Warranty

Power - 8W / 15W / 22W



MODEL	PE PLPA 001	PE PLPA 002
SHAPE	Square	Round
COLOR	WH / WW / NW	
VOLTAGE	AC 100 - 250 V	

Available In - Recess / Surface

> 0.95 Power Factor

## PREMIUM PANELS

3 Year Warranty

Power - 8W / 12W / 15W / 22W



MODEL	PE PPPA 001	PE PPPA 002
SHAPE	Square	Round
COLOR	WH / WW / NW	
VOLTAGE	AC 100 - 250 V	

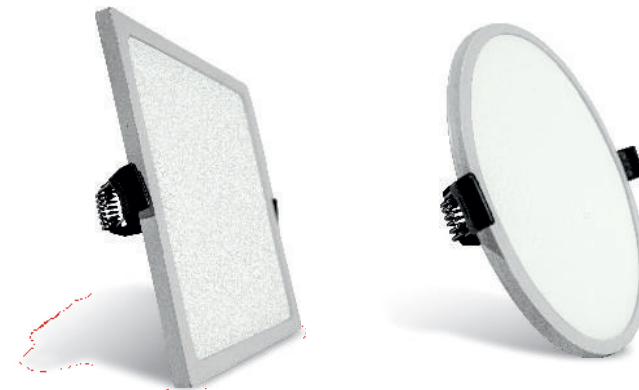
Available In - Recess / Surface

> 0.95 Power Factor

## SUPER SLIM PANELS

2 Year Warranty

Power - 8W / 15W / 22W



MODEL	PE SSPA 001	PE SSPA 002
SHAPE	Square	Round
COLOR	WH / WW / NW	
VOLTAGE	AC 100 - 250 V	

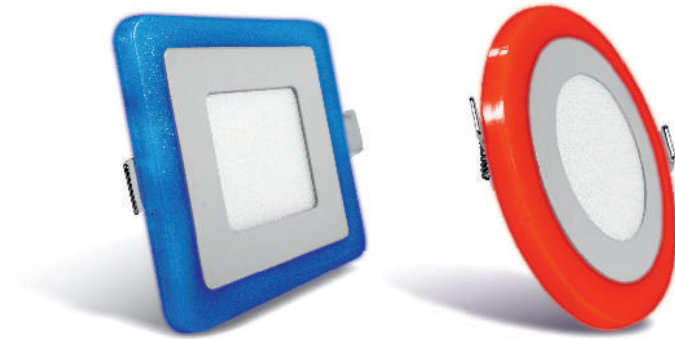
Available In - Recess / Surface

> 0.95 Power Factor

## 2 COLOR PANELS

2 Year Warranty

Power - 6W / 9W / 16W



MODEL	PE 2CPA 001	PE 2CPA 002
SHAPE	Square	Round
COLOR	WH + BL / RD / GR / PINK / PGB	
VOLTAGE	AC 100 - 250 V	

Available In - Recess / Surface

## VISTA PANELS

2 Year Warranty

Power - 9W



MODEL	PE VSPA 001 (Vista)	PE VSPPA 002 (Vista Plus)
SHAPE	Round	Round
COLOR	WH + BL / PK / GR / RD	BL / PK / GR / RD + WH
VOLTAGE	AC 100 - 250 V	

## 3 COLOR PANELS

2 Year Warranty

Power - 15W



MODEL	PE 3CPA 001
SHAPE	Square
COLOR	WH
VOLTAGE	AC 100 - 250 V

Available In - Recess / Surface

## PANELS BY FEET

2 Year Warranty

Power - 28W (1 FT.) / 48W (2 FT.)



MODEL	PE FTPA 001	PE FTPA 002
SHAPE	Square (1 FT.)	Square (2 FT.)
COLOR	WH / WW / NW	
VOLTAGE	AC 100 - 250 V	

Available In - Recess

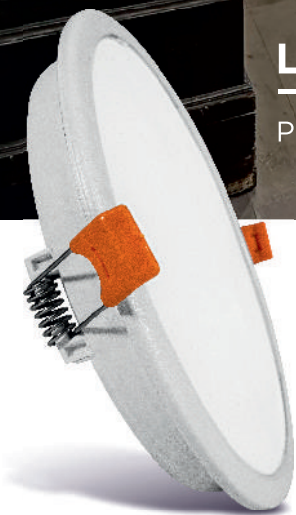
# LED DOWNLIGHTS



## LUMINA DOWNLIGHT

2 Year Warranty

Power - 8W / 15W / 22W — PE LMDL 001 / 02



<b>MODEL</b>	PE LMDL 001	PE LMDL 002	PE JBDL 001	PE DPDL 001	PE MDL 001	PE CDL 001
<b>SHAPE</b>	Square	Round	Round	Round	Round	Round
<b>COLOR</b>	W / WW / NW	W / WW / NW	W / WW /G/B/P	W / WW /G/B/P	W / WW	W / WW
<b>VOLTAGE</b>	AC 100 - 250 V					

## JUNCTION BOX

2 Year Warranty

Power - 3W / 6W — PE JBDL 001



## DEEP DOWNLIGHT

2 Year Warranty

Power - 6W — PE DPDL 001



## MOON DOWNLIGHT

2 Year Warranty

Power - 15W / 20W — PE MDL 001



## CEILING DOWNLIGHT

2 Year Warranty

Power - 12W / 18W — PE CDL 001



## ORBIT SPOTLIGHT

2 Year Warranty

Power - 6W / 12W



MODEL	PE ORSP 001
SHAPE	Round
VOLTAGE	AC 100 - 250 V
COLOR	WH / WW

Available In - recess

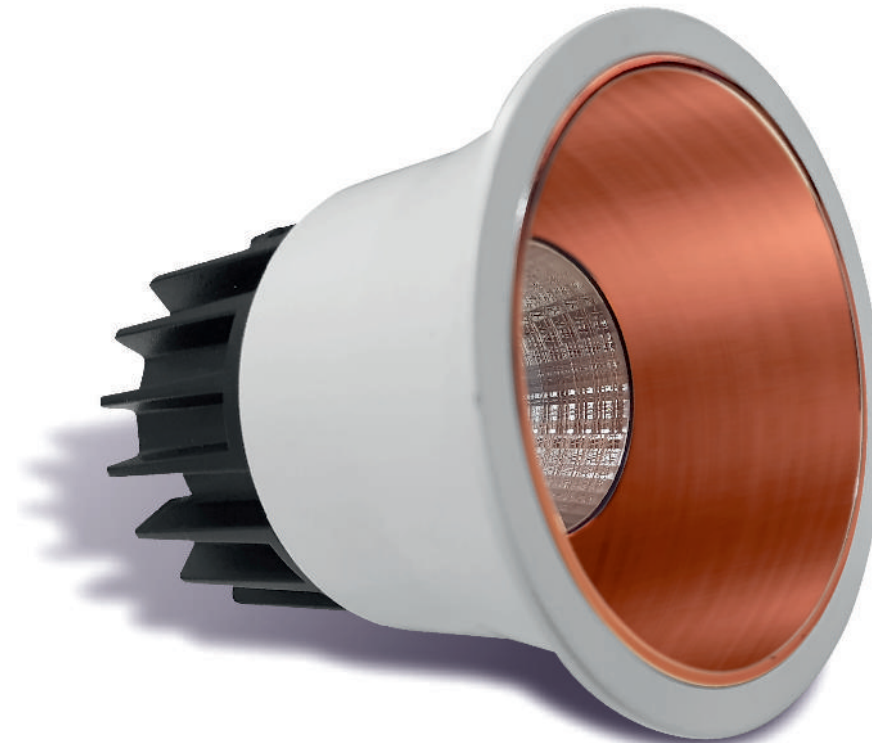
## HALO SPOTLIGHT

2 Year Warranty

Power - 6W / 16W

MODEL	PE HLSP 001
SHAPE	Round
VOLTAGE	AC 100 - 250 V
COLOR	WH / WW / NW

Available In - recess



### Available Reflectors



White



Silver



Dark Grey



Black



Matt Black



Gold



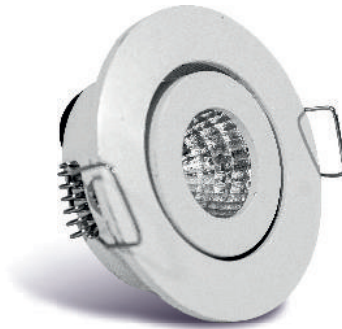
Rose Gold

## MINI COB

2 Year Warranty

Power - 1W

Power - 3W



MODEL	PE MI COB 001	PE MI COB 002
SHAPE	Round	Round
VOLTAGE	AC 100 - 250 V	
COLOR	WH / WW / RD / GR / BL / PK	

## STRIKER

Power - 3W / 5W

## COB SURFACE

Power - 3W



MODEL	PE STRK COB 001	PE MI COB SUR 001
SHAPE	Round	ROUND
VOLTAGE	AC 100 - 250 V	
COLOR	WH / WW / RD / GR / BL / PK	

## COB SPOTLIGHT

2 Year Warranty

Power - 3W / 6W / 9W / 16W  
20W / 30W



MODEL	PE COB 001
SHAPE	Round
VOLTAGE	AC 100 - 250 V
COLOR	WH / WW / NW

# LED TRACK LIGHTS



## TRACK LIGHT 2 Year Warranty

Power - 5W / 10W / 20W / 30W

MODEL	PE TL 001	PE TL 002
VOLTAGE	AC 100 - 250 V	
COLOR	WH / WW / NW	

Available In - 5W only in surface



## SURFACE TRACK LIGHT

Power - 5W / 10W / 20W / 30W

MODEL	PE STL 001	PE STL 002
VOLTAGE	AC 100 - 250 V	
COLOR	WH / WW / NW	



### Available Reflectors -



White Silver Dark Grey Black Matt Black Gold Rose Gold

# LED STRIP LIGHTS

## STRIP LIGHT

6 Months Warranty

MODEL	PE SL 001	PE SL 002
TYPE	5050	2835
LENGTH	30 / 60 PER METER	120 / 204 / 240 PER METER
VOLTAGE	DC12V / DC24V	
COLOR	WH / WW / RD / GR / BL / PINK / PURPLE	
SIZES	5 METERS / 10 METERS	

## LED TUBE LIGHTS

“Choose from our wide range of LED TUBES which produce light that perfectly suits your surroundings.”



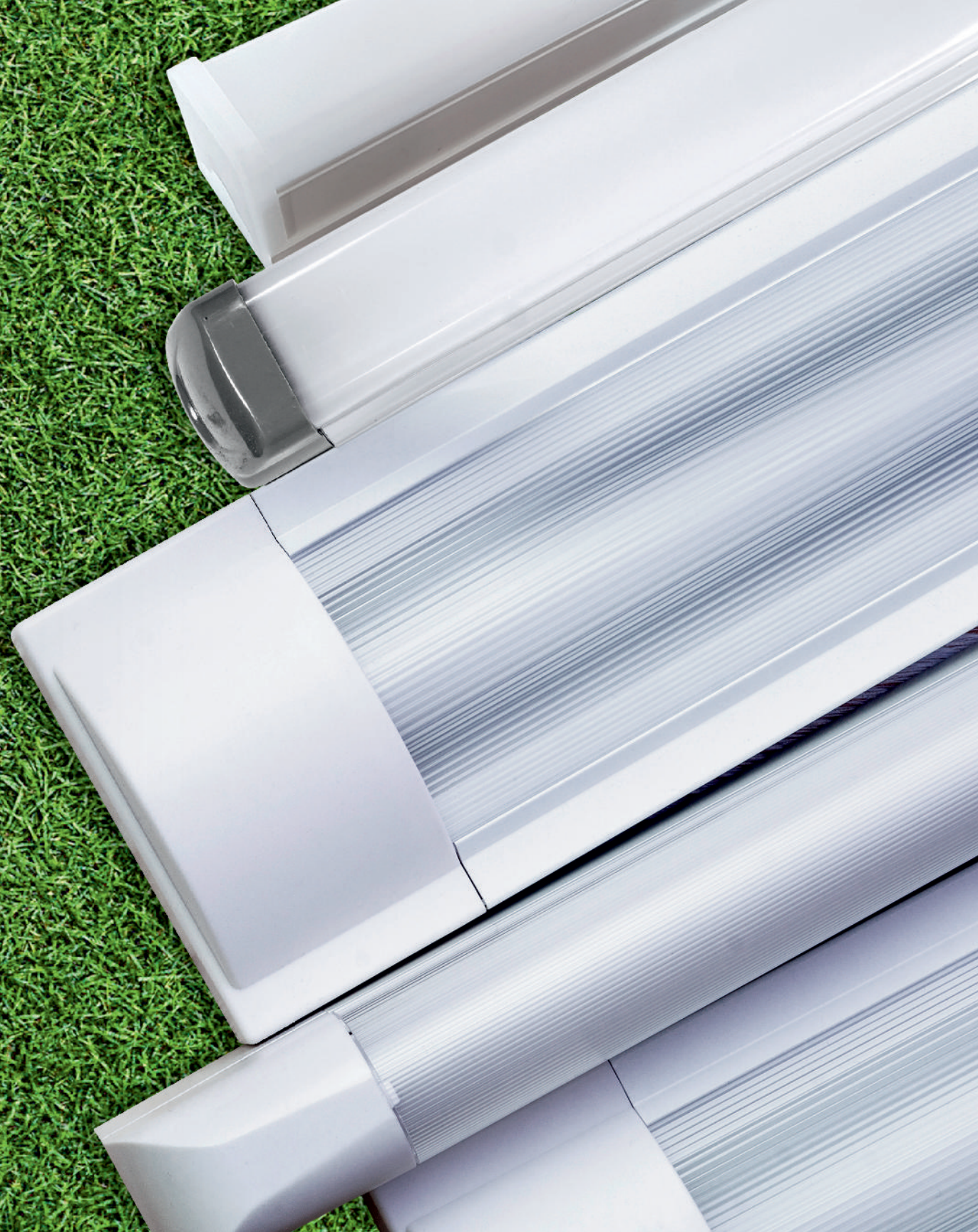
Energy Saving



Long Life Span



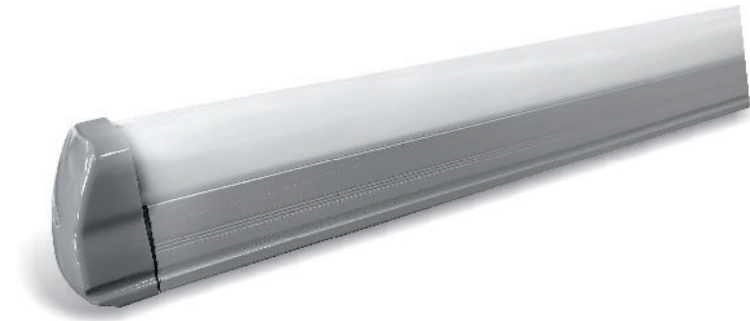
High Illuminance



## OPTIMA TUBE

2 Year Warranty

Power - 36W (4Ft.)



MODEL	PE OPT TB 001
VOLTAGE	AC 100 - 250 V
COLOR	WH / WW / NW

## PRO TUBE

2 Year Warranty

Power - 5W / 10W (2 Ft.) / 24W (4 Ft.)



MODEL	PE PR TB 001
VOLTAGE	AC 100 - 250 V
COLOR	WH / WW / NW / R / G / B / P

## BLISS TUBE

2 Year Warranty

Power - 5W (1 Ft.) / 10W (2 Ft.) / 20W (4 Ft.)



MODEL	PE BLS TB 001
VOLTAGE	AC 100 - 250 V
COLOR	WH / WW / NW / R / G / B / P

## PURIFICATION TUBE

2 Year Warranty

POWER - 20W (2 Ft.) / 36W (4 Ft.)



MODEL	PE PTB 001
VOLTAGE	AC 100 - 250 V
COLOR	WH / WW

# LED HIGH BAY LIGHTS



## HIGH BAY LIGHT

1 Year Warranty

Power - 30W / 50W / 100W / 150W

MODEL	PE HBL 001
VOLTAGE	AC 100 - 250 V
COLOR	WH / WW

# LED BULBS

“ We at Pride, offer an exclusive range of LED BULBS. With advancement & technology and constant innovation, we bring to you some different kinds of LED bulbs with distinct features and spread of light of its own. ”

## TUBE BULB

2 Year Warranty

Power - 9W



MODEL	PE TBBL 001
COLOR	WH + BL / RD / GR / PINK
VOLTAGE	AC 100 - 250 V

## ORION BULB

2 Year Warranty

Power - 3W / 5W / 7W / 9W / 12W / 15W



MODEL	PE ORBL 001
COLOR	WH / WW / NW
VOLTAGE	AC 100 - 250 V

## 'O' BULB

2 Year Warranty

Power - 15W / 20W / 30 / 50W / 100W



MODEL	PE OBL 001
COLOR	WH
VOLTAGE	AC 100 - 250 V

## SLIM SMD FLOOD LIGHT

2 Year Warranty

Power - 15W / 30W / 50W / 100W / 150W / 200W / 400W  
- (PE SSFL 001)



## DISC FLOOD LIGHT

2 Year Warranty

Power - 50W / 100W / 150W / 200W - (PE DIFL 001)



MODEL	PE SSFL 001	PE DIFL 001	PE FLAFL 001	PE RDFL 001	PE BRYFL 001	PE LEFL 001
VOLTAGE	AC 100 - 250 V					
PF	0.98					
COLOR	WH / WW / R / G / B	WH	WH / WW / R / G / B	WH / WW / R / G / B	WH	WH / WW / R / G / B



## FLASH FLOOD LIGHT

2 Year Warranty

Power - 30W / 50W / 100W / 200W - (PE FLAFL 001)



## RADIANT FLOOD LIGHT

2 Year Warranty

Power- 30W / 50W / 100W / 150W / 200W - (PE RDFL 001)



## BRYTO FLOOD LIGHT

2 Year Warranty

Power - 50W / 100W / 150W / 200W - (PE BRYFL001)



## LENS FLOOD LIGHT

2 Year Warranty

Power - 50W / 100W / 150W / 200W - (PE LEFL 001)



# LED STREET LIGHTS

Street Lights are the key luminaries concerning the safety and security of our society. Pride presents sturdy and durable LED Street Lights with ideal illumination, sustaining darker hours in a smarter way.

MODEL	PE AR STL 001	PE DZ STL 001	PE CL STL 001	PE GLSTL 001
VOLTAGE	AC 100 - 250 V			
PF	0.98			
COLOR	WH / WW			



## ARC STREET LIGHT

2 Year Warranty

Power - 15W / 24W / 30W / 36W / 48W - (PE AR STL 001)



## CLASSIC STREET LIGHT

2 Year Warranty

Power - 15W / 24W / 30W / 36W / 48W / 72W / 100W  
- (PE CL STL 001)



## GLAZE STREET LIGHT

2 Year Warranty

Power - 15W / 24W / 30W / 36W / 48W / 72W / 100W  
- (PE GLSTL 001)



## DAZZLE STREET LIGHT

2 Year Warranty

Power - 30W / 50W / 100W / 150W - (PE DZ STL 001)



# OUTDOOR & INDOOR LED WALL LIGHTS

Enhance the beauty  
of your walls.



# PROJECT LIGHTING

## OUTDOOR & INDOOR LED WALL LIGHTS

2 Year Warranty

These LED wall lights provide a modern, minimalist design and gives an architectural look when installed on the walls of homes, buildings, gardens and along pathways. These LED wall lights are IP 65 approved and can resist rain, dust and any kind of bad weather condition.



'K' Light - 2x3W



'K' Light - 1x3W



4 Way Light - 4x4W



3 Way Light - 3x3W



Cylinder Light - 2x3W



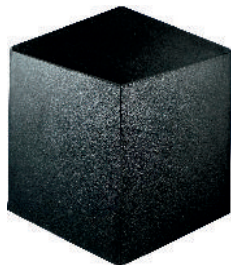
Cylinder Light - 1x3W



Cone Light - 2x5W



Cone Light - 2x3W



House Light - 2x3W



Router Light - 2x8W



Luna Light - 6W



Luna (Movable) Light - 3W

# GARDEN SPIKE LIGHT

2 Year Warranty



## LED LIGHT

Power - 6W  
- (PE GS 001)



## SOLAR LIGHT

Power - 7W  
- (PE GSL 001)

MODEL	PE GS 001	PE GSL 001	PE SSL 001	PE GSFL 001	PE SWL 001	PE SFL 001
VOLTAGE	AC 100 - 250 V					
COLOR	WW / GR	WW / GR	WH / WW	WH / WW	WH / WW / BL	WW / R / G / B



## SOLAR STREET LIGHT

2 Year Warranty

Power - 20W / 40W / 60W - (PE SSL 001)



## SOLAR FLOOD LIGHT

2 Year Warranty

Power - 12W - (PE GSFL 001)



## SOLAR WALL LIGHT

2 Year Warranty

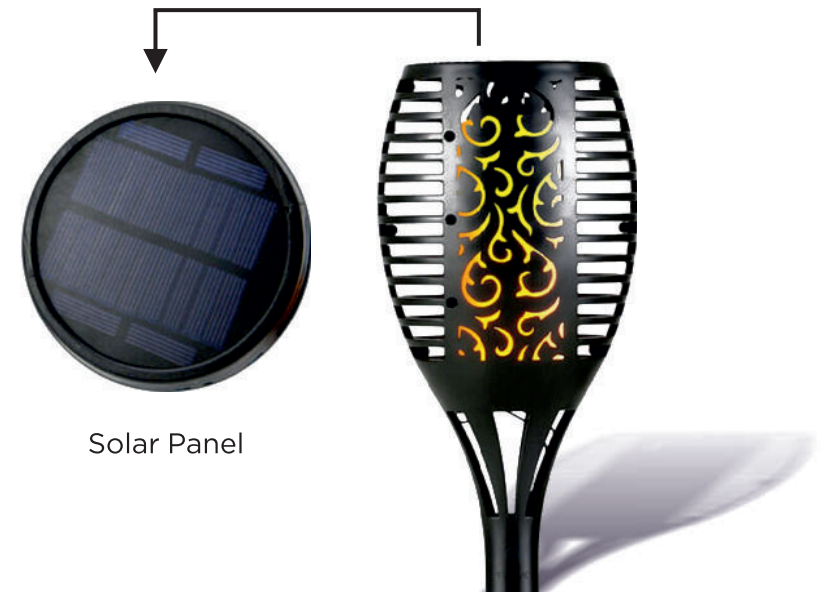
Power - 5 - (PE SWL 001)



## SOLAR FLAME LIGHT

2 Year Warranty

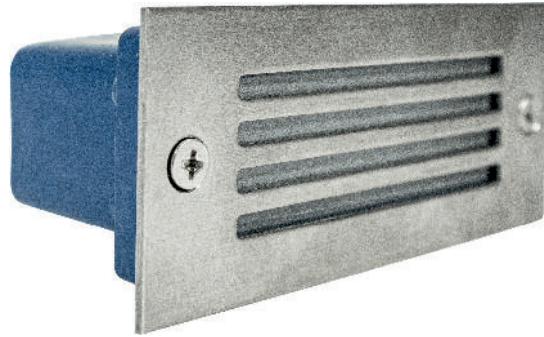
(PE SFL 001)



## LED FOOT LIGHT

2 Year Warranty

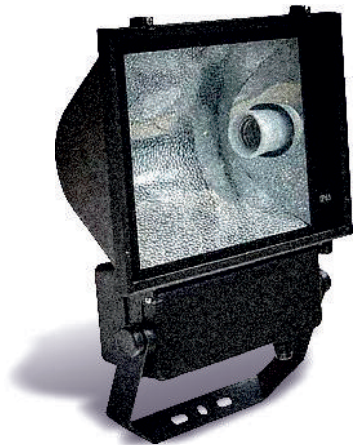
Power - 3W



## METAL HALIDE

1 Year  
Warranty

Power - 150W / 400W  
- (PE MTL HL 001)



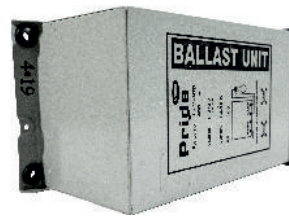
MODEL	PE MTL HL 001	PE CG 001
VOLTAGE	AC 180 - 250 V	AC 180 - 250 V
COLOR	WH	NA

**NOTE** - Control gear is available in Regular / Ultra Slim / Standard Series

## CONTROL GEAR

1 Year  
Warranty

Power - 150W / 400W  
- (PE CG 001)



## LED DRIVERS

2 Year Warranty

### PANEL LIGHT DRIVER

Isolated (PF - 0.95)

MODEL	PE SDR 001
VOLTAGE	AC 100 - 250 V
POWER	1-3W / 5-8W / 8-12W / 15-18W / 18-24W



### STREET LIGHT DRIVER

MODEL	PE PDR 001
VOLTAGE	AC 100 - 250 V
POWER	15W / 24W / 30W / 36W / 48W



### SMPS STRIP LIGHT DRIVER

MODEL	PE AMP 001
VOLTAGE	AC 100 - 250 V
POWER	2 AMP / 5 AMP



